

VDRG® BoviDia 5 Ag Rapid kit

CAT. NO. PB-BD5-11



GENERAL DESCRIPTION

" VDRG® BoviDia 5 Ag Rapid kit "is a lateral flow chromatographic immunoassay for the differential detection of *Coronavirus*, *Rotavirus*, *Cryptosporidium*, *Giardia*, *E. coli* K99 in bovine feces. This is a differential diagnostic kit to detect each antigen by mixing bovine feces with dilution buffer followed by putting them into the sample hole. If there are antigens in the bovine feces, these antigens bind to each specific antibody-gold particle conjugates and move on the membrane by capillary forces, and then shows a red line on the test line due to the binding with each specific antibodies which are already applied on the membrane. This test kit, the diagnostic reagent can differential detect each antigens quickly and simply at 10 minutes after of samples.

KIT COMPONENTS

Components	10 Tests/kit
① BoviDia 5 Ag Rapid device	10 tests
② Sample dilution buffer(1ml)	10 vials
③ Swabs	10 ea
④ Dropper cap	10 ea
⑤ Instruction Manual	1 copy

APPEARANCE

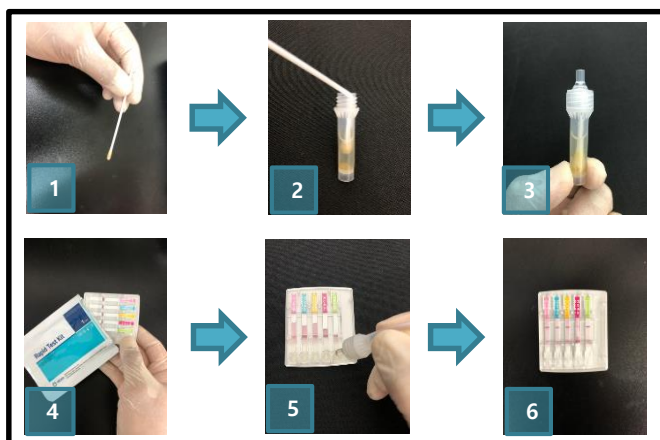
- In a test device : sample application round holes(S1, S2, S3, S4, S5) are located at lower part of plastic cassette. The location of test (Corona(*Coronavirus*), Rota(*Rotavirus*), Crypto(*Cryptosporidium*), *Giardia*, *E. coli* K99) and control (C) lines are marked on the rectangle display. The sample pad, feces separation pad, conjugate pad, nitrocellulose membrane, and absorption pad are attached to the test strip with them overlapped one after another.
- Assay dilution bottle : There is a transparent and colorless liquid buffer in the plastic bottle for dilution of a sample.

SAMPLE PREPARATION

- Use Bovine feces as samples.
- Take the sample by pricking inside of feces deeply or pulling out directly through bovine's anus.
- Then mix together the sample and dilution solution.

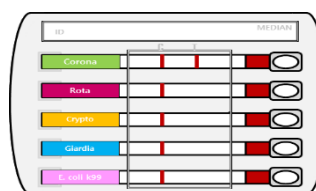
TEST PROCEDURE

- Swab the feces from the stool or rectums using the sample collection swab.
- Put the sample swab(③) in a tube containing the sample diluent(②), mix it 10 times, then cut the groove into the swab and cut off the rod, and let the head of the swab fall into the tube.
- Attach the dropper cap (④) to the tube containing the sample dilution solution and the cut swab to close it.
- Place the VDRG® BoviDia 5 Ag Rapid kit device(①) on a flat surface.
- Take the supernatant of sample solution using dropper, and then instill 4 drops into the each five sample halls.
- Verify the result at 10 minutes.

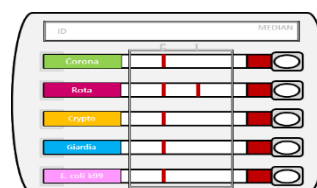


INTERPRETATION OF RESULT

- Positive
 - Coronavirus* Positive: when both control and *Corona* test lines are red.



- Cryptosporidium* positive: when both control and *Crypto* test lines are red.

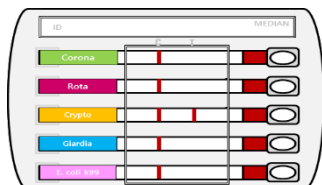


VDRG® BoviDia 5 Ag Rapid kit

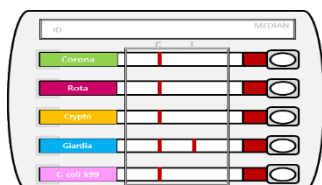
CAT. NO. PB-BD5-11



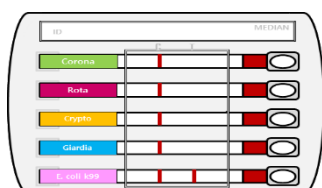
C. *Cryptosporidium* positive: when both control and *Crypto* test lines are red.



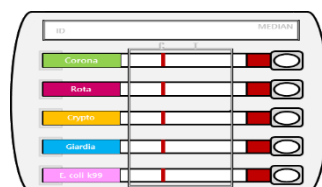
D. *Giardia* positive: when both control and *Giardia* test lines are red.



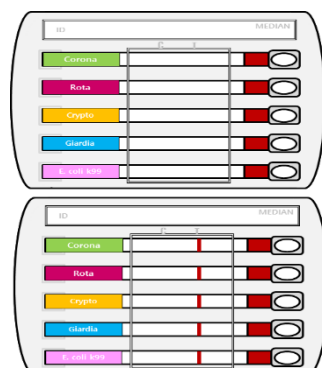
E. *E. coli* K99 positive: when both control and *E. coli* K99 test lines are red.



2. Negative: when only control line is red



3. Re-test when control line is not visible. Regardless of BoviDia 5 presence, a control line should always appear. The control line is needed to check whether abnormal reaction occurs or not, so if there is no control line, re-test should be performed



PRECAUTIONS

1. For in-vitro animal diagnostic use only.
2. Read this instruction manual thoroughly and follow all steps strictly for successful use of the product.
3. Extended exposure of this Rapid Test Device to moisture may decrease test performance. Therefore, open the device right before use (<10 minutes).
4. Make sure to use a separate test tube, dropper, and cotton swab for each sample.
5. Do not touch the membrane in the device. The results may be affected.
6. Do not use test device and reagents after expiration date.
7. The samples should be used immediately at the site of use.
8. samples stored at room temperature can be stored for 2 days, and samples stored in refrigeration or freezing can be stored for up to 8 days.
8. The samples should be used within 6 hours after dilution.
9. After use, all wastes should be sterilized by high pressure steam sterilization or equivalent sterilization method. In particular, *Giardia* and *Cryptosporidium* may be causative agents of common communicable diseases, so please do your personal hygiene should be considered if both of these are positive.
10. This kit is a diagnostic reagent designed for the primary screening of bovine diarrhea antigen diagnosis, and results can be obtained in a simple and quick, but There may be a difference in sensitivity between the test method designed with a more precise principle.
11. Detection sensitivity may vary depending on pathogen strain.
12. Since this kit can not completely eliminate the possibility of false positive or false negative results due to various factors, final diagnosis can not be made based on the result of this product.
13. The final decision of this kit must be made by a professional veterinarian.

STORAGE AND STABILITY

Store all reagents at 2~30°C. Do not freeze. Reagents remain-stable until the expiration date when stored as instructed.

MEDIAN Diagnostics Inc.

878, Sunhwan-daero, Dongnae-myeon, Chuncheon-si, Gangwon-do, 24399, Republic of Korea
 Tel: +82 (0)33 244 0100
 Fax: +82 (0)33 244 4634
 E-mail: median@mediandx.com

TEST METHOD SUMMARY

Samples collection and treatment



Prepare Device



4 drops into a device



10min



Read the results